

Wear Resistant Hardfacings Drilling Tools

Features

- Highly resistant to wear
- Prolonged stabilization of equipment
- Suitable for stabilizers, motor sleeves, hole openers, mills etc.
- Longer operating hours
- Reduced risk of washing between the inserts
- Improved tolerance of wear during abrasive drilling conditions
- Out-performing conventional dressings

Benefits

- Increased drilling hours
- Reduced manual handling and HSE issues on the drill floor
- Ideal for long term rental, particularly in remote locations
- Reduced risk of a redress charge

Hunting have designed and developed a new hardfacing and application technique for steel and non magnetic components. The hardfacing is particularly for tools intended for use in hard drilling formations and remote drilling locations.

Metal parts frequently fail in their intended use, due not only to fracturing but also to wear and abrasion. The HHF001 Hunting Hard-Wearing Blade Dressing provides an excellent hardwearing surface, providing better protection to the blade than conventional and diamond dressed equipment.

Downhole drilling fluids contain particulate materials such as drill cuttings and other corrosive materials which can abrade and damage the surface of the blade, especially where they are forced along the small passageways across the blade that are formed in a conventional brickwork pattern of inserts.

Set within a hard wearing composite, HHF001 inserts are applied in a chevron pattern, with a small gap between each adjacent component; this process is continued over the surface of the blade in order to build up an unconventional pattern over the contact surface of the blade. The chevron style inserts are laid in a composite formula - providing a highly wear resistant surface protection.

PDC inserts (HHF002) or a Tungsten Chip Blanket (HHF003), which are more economical to apply, can be applied to the leading end or to both leading/trailing end for additional protection during extremely aggressive well conditions and/or for back reaming.

The resulting hardfacing is a durable hardwearing surface, providing an increased protection to the blades compared to conventional hardfacing materials and techniques.

Full range of Hardfacings



Hunting Proprietary HHF001

Chevron style inserts laid in a significantly wear resistant composite formula.



HF 1000

Crushed Tungsten Carbide, held in a nickel bronze matrix.



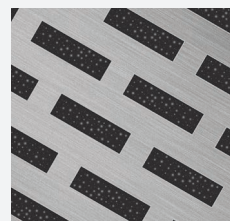
HF 2000

Trapezoidal tungsten carbide inserts, held in a sintered carbide nickel bronze matrix.



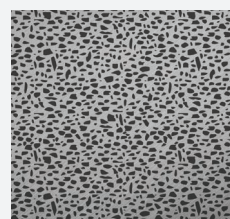
HF 3000

Tungsten carbide inserts, sets in a powder spray deposit. Recommended for non magnetic stabilizers.



Diamond Impregnated

Diamond impregnated inserts set in a powder spray deposit. Ideal for drilling hard formations, providing the blades with increased protection from abrasive wear.



HF 5000

This process applied tough molten carbide particles of varying sizes, held in a nickel chrome matrix.